

Southern Lake Huron Adaptation Plan ASHFIELD-COLBORNE-LAKEFRONT ASSOCIATION 2026 Update

May 9

Supported by Natural Resources Canada's
Climate-Resilient Coastal Communities Program



Natural Resources
Canada

Ressources naturelles
Canada

Canada



Canada
Water Agency

Agence de l'eau
du Canada



GODERICH
Canada's Prettiest Town



2021-2023

SHORELINE VALUES:

- Maintain healthy and accessible beaches
- Protect nearshore water quality for swimming and drinking
- Preserve coastal nature and restore shoreline ecosystems
- Reduce exposure to flooding and erosion hazards



**Great Lakes
Freshwater
Ecosystem
Initiative**

100% Federally funded

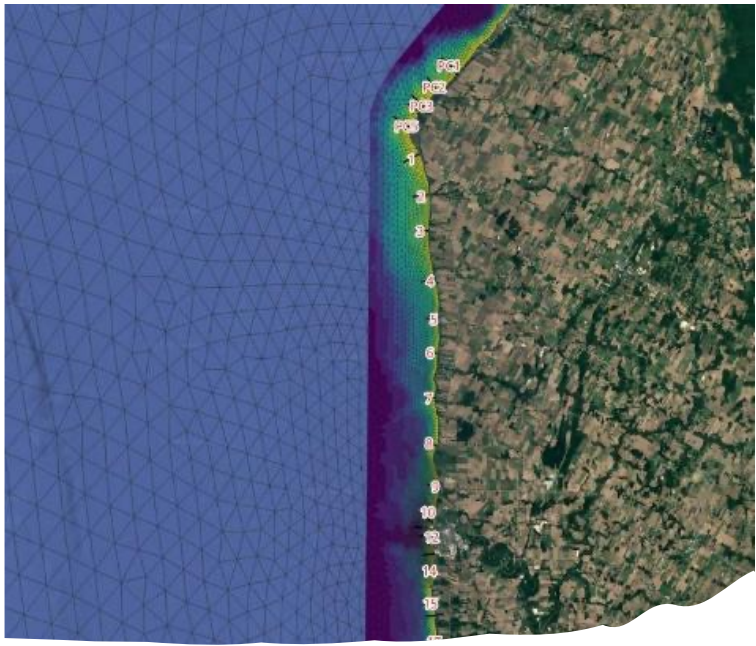
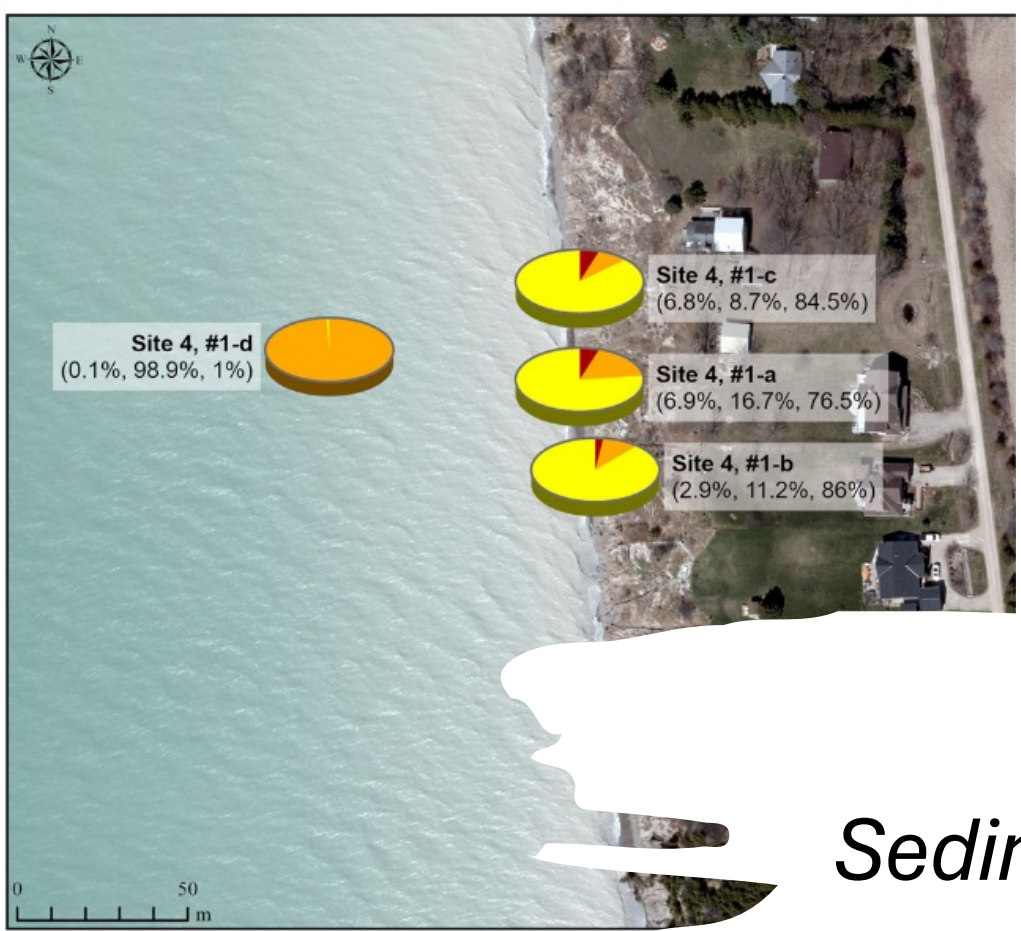
- Nearshore bathymetry and sediment sampling
- Coastal Sediment Budget
- Artificial Reefs

Sediment Bypass Project - - -

**Climate
Resilient
Coastal
Communities**

75% Federally funded

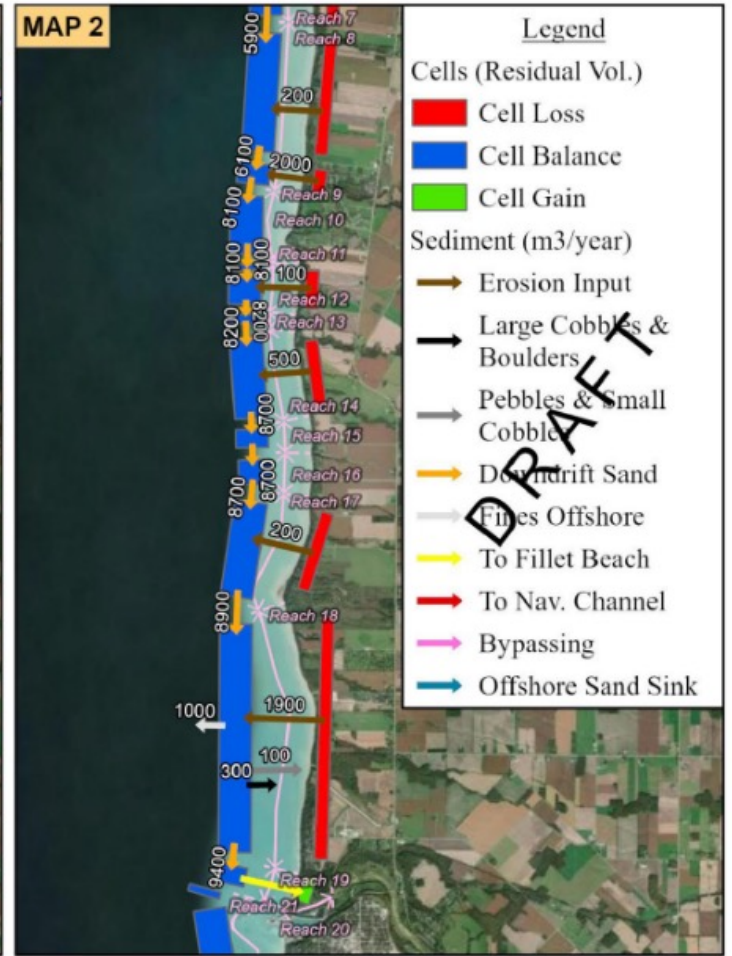
- Planned Relocation Manual
- Development Policy Review
- BRIC with Laurier University***
- CoastAdapt Case Study***



Sediment Budget



Sediment Samples Sept 2024 - Percent Compos.
 Site 4
MVCA Sediment Budget



- Legend**
- Cells (Residual Vol.)**
- Cell Loss (Red)
 - Cell Balance (Blue)
 - Cell Gain (Green)
- Sediment (m³/year)**
- Erosion Input (Brown arrow)
 - Large Cobbles & Boulders (Black arrow)
 - Pebbles & Small Cobble (Grey arrow)
 - Down-drift Sand (Orange arrow)
 - Fines Offshore (Light blue arrow)
 - To Fillet Beach (Yellow arrow)
 - To Nav. Channel (Red arrow)
 - Bypassing (Pink arrow)
 - Offshore Sand Sink (Dark blue arrow)

DRAFT



Sediment Budget Analysis System (SBAS)

Data Sources
Imagery: Esri World Imagery Basemap





Planning & development policy...



Increasing
UNDERSTANDING



EXPERT Practitioners





EXPERTS in Academia

CoastAdapt: Connecting people on the front lines of coastal change to the resources they need to adapt



CLIMAtlantic

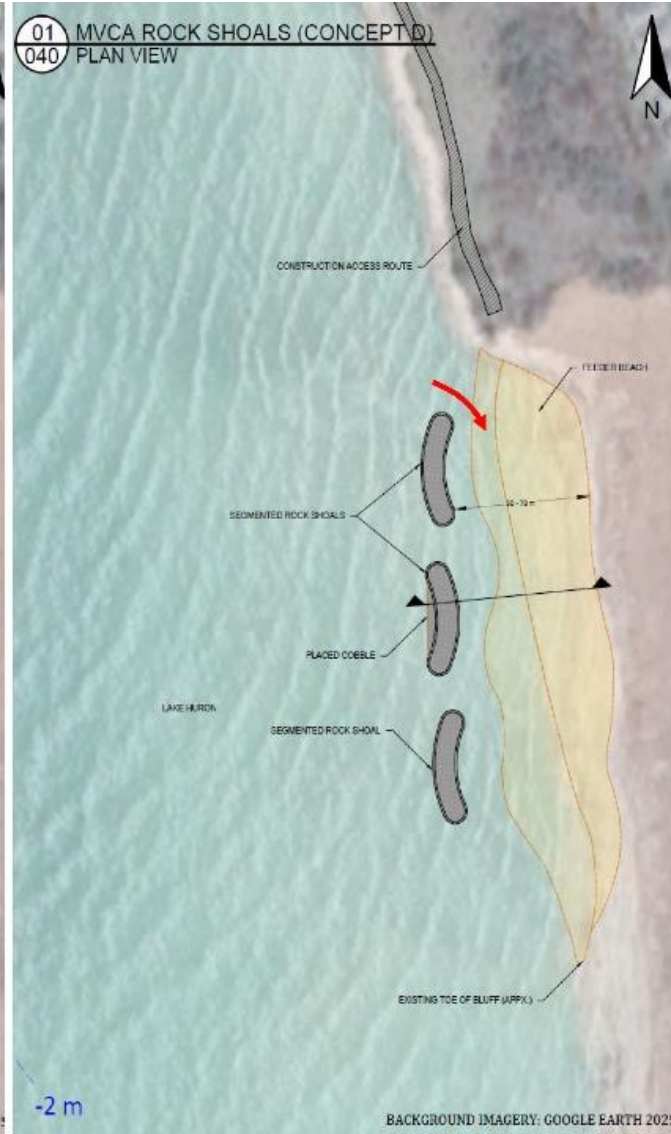
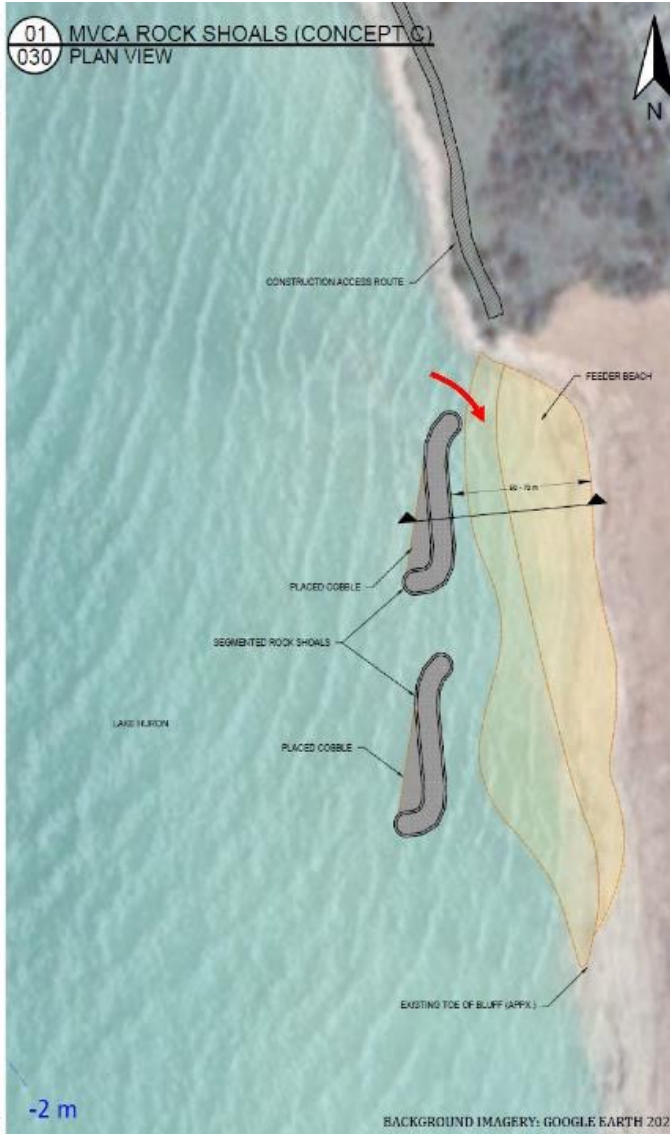
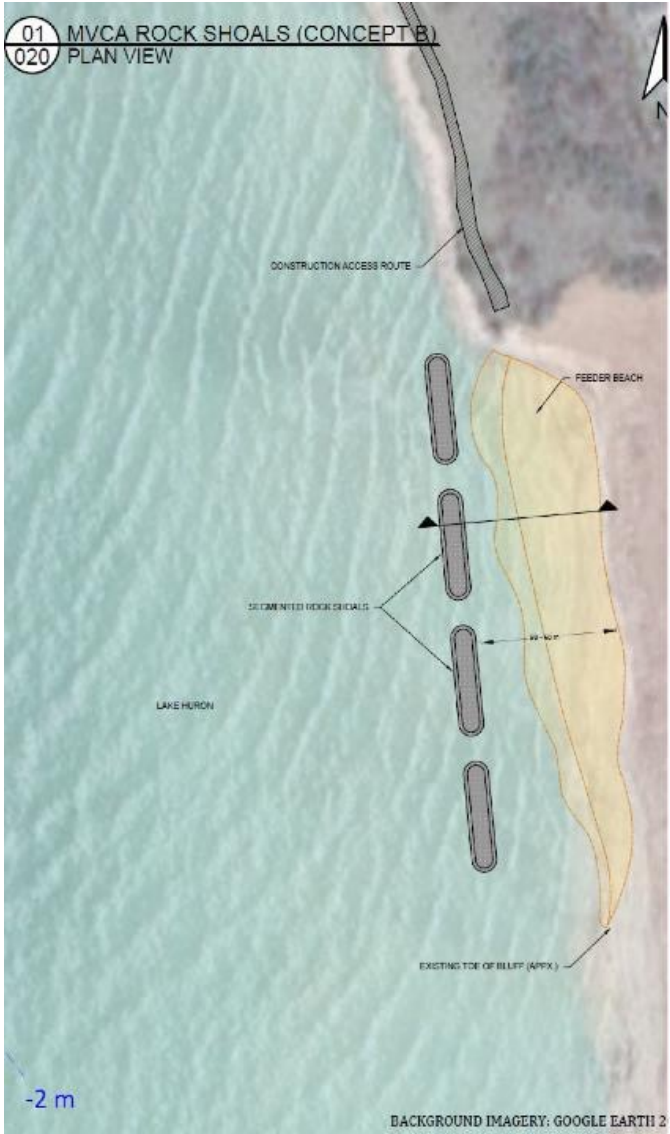


What is CoastAdapt?

CoastAdapt is a new national initiative aimed at empowering communities from coast-to-coast-to-coast with the knowledge and resources they need to build a safer, more resilient future.

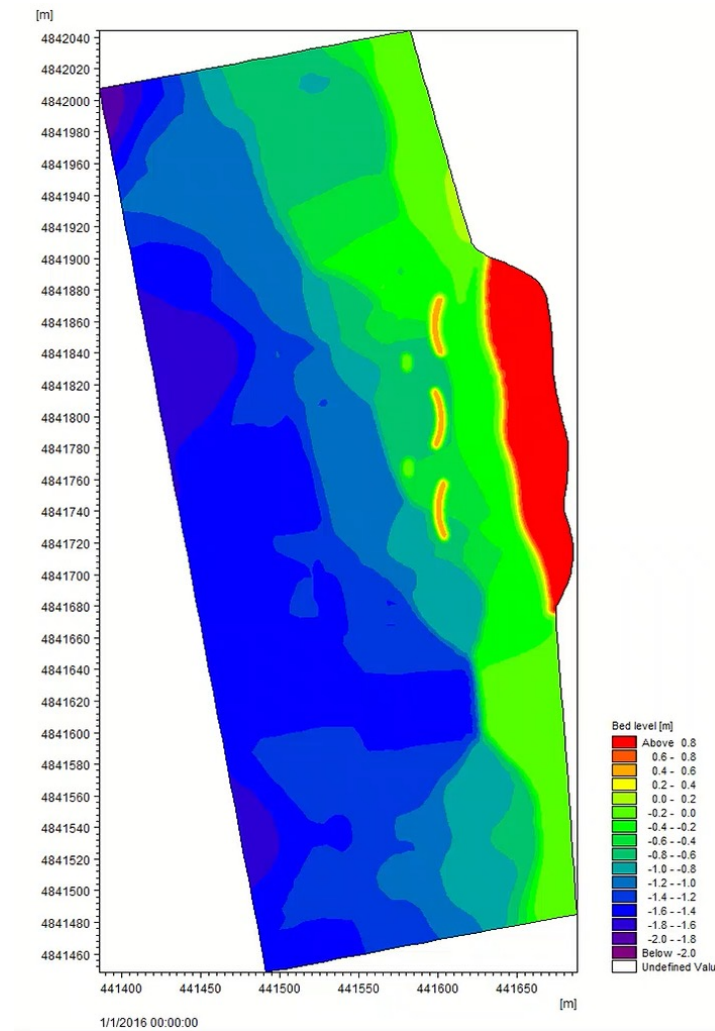






Bed Level

The impact of rock shoals on the feeder beach can be clearly observed in the animation. In the beginning of the year during which water level was relatively low, three salients were developed at the leeside of the rock shoals. During summer with higher water level, the feeder beach was eroded. The erosion became more severe by the end of the year because of higher wave heights.





Maintain healthy and accessible beaches

Protect nearshore water quality for swimming and drinking

Preserve coastal nature and restore shoreline ecosystems

Reduce exposure to flooding and erosion hazards

THANK YOU

QUESTIONS?

Funding Provided By:

Supported by Natural Resources Canada's
Climate-Resilient Coastal Communities Program



Agence de l'eau
du Canada



Technical Support Provided By:

